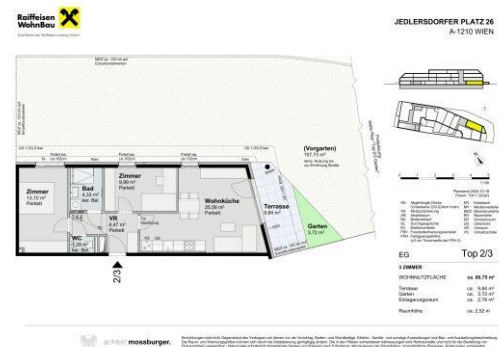


JEDLERSDORFER PLATZ 26 / 2 / TOP 3

1210 Wien



QUALITY LIVING IN THE ATMOSPHERIC HEURIGENVIERTEL.

| | | | |
|------------------------------|--------------------------|---------------------------|----------------------------------|
| Property number: | 12471 | Rooms: | 3 |
| Property type: | Apartment | Living area: | 60.75 m² |
| Contract type: | Property for sale | Terrace area: | 9.84 m² |
| Status: | In Planung | Garden area: | 3.72 m² |
| Floor: | EG | Thermal energy required: | B 31.5 kWh/m²a |
| Purchase Price: | €356,900.00 | Energy efficiency rating: | A 0.71 |
| excluding ancillary expenses | | | |

YOUR CONTACT PERSON:

Frau Mag. Christina Baumgartner

Phone: **+43 664 88758263**

E-mail: **christina.baumgartner@raiffeisen-wohnbau.at**



Raiffeisen WohnBau 

Raiffeisen WohnBau ist eine Marke der Raiffeisen-Leasing GmbH.

Raiffeisen WohnBau

Mooslackengasse 12, 1190 Wien

Adamgasse 7a, 6020 Innsbruck

Telefon: **+43 1 716 01-8241**

E-Mail: **immobilien@raiffeisen-wohnbau.at**

Web: **www.raiffeisen-wohnbau.at**



Vorbehaltlich Änderungen, Druck- und Satzfehler.